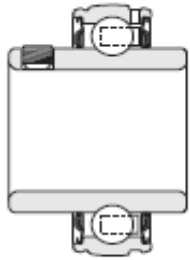
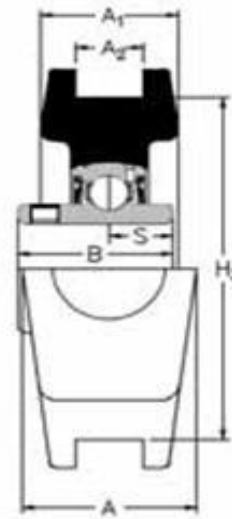
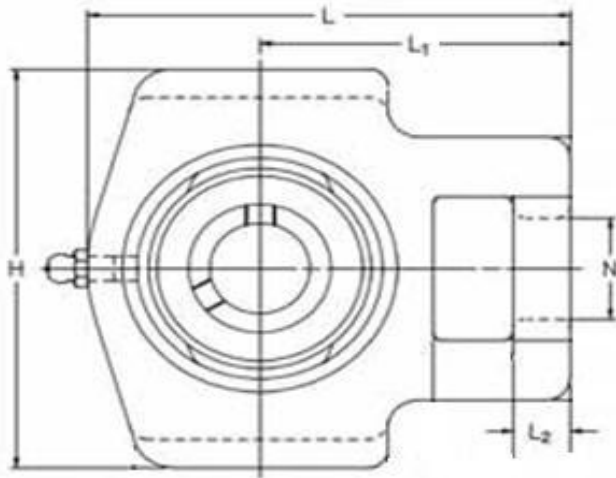
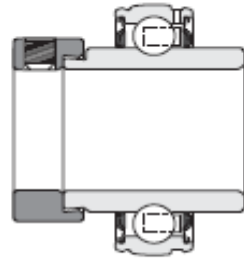


Take Up Units



1000G

Standard



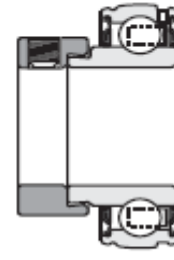
1000DECG

DEC Type



1200G

A Type



1200ECG

EC Type

See [Housed Bearing Insert](#) pages for dimensional detail

Take Up Units



Shaft Diameter (mm)		RHP designation	Variations			Basic Insert	Casting group	Dimensions(mm)										
Metric	Imperial		A	EC	DEC			L	L1	L2	H	H3	N	A	A1	A2	B	S
	19.05	ST3/4	•	•	•	1020	2	96.5	62	11.5	88.5	76	22.5	36	27.5	13.5	31	12.73
20		ST20	•	•	•	1020	2	96.5	62	11.5	88.5	76	22.5	36	27.5	13.5	31	12.73
	22.225	ST7/8		•	•	1025	3	98	62	11.5	88.5	76	22.5	36	27.5	13.5	34.1	14.33
	23.812	ST15/16		•	•	1025	3	98	62	11.5	88.5	76	22.5	36	27.5	13.5	34.1	14.33
25		ST25	•	•	•	1025	3	98	62	11.5	88.5	76	22.5	36	27.5	13.5	34.1	14.33
25		MST25				1030	1	115.5	71.7	12.5	101.5	89	22.5	36.5	30	13.5	38.1	15.93
	25.4	ST1	•	•	•	1025	3	98	62	11.5	88.5	76	22.5	36	27.5	13.5	34.1	14.33
	25.4	MST1				1030	1	115.5	71.7	12.5	101.5	89	22.5	36.5	30	13.5	38.1	15.93
	28.575	ST1-1/8		•	•	1030	4	115.5	71.7	12.5	101.5	89	22.5	36.5	30	13.5	38.1	15.93
30		ST30	•	•	•	1030	4	115.5	71.7	12.5	101.5	89	22.5	36.5	30	13.5	38.1	15.93
30		MST30				1035	2	124	75.5	12.5	101.5	89	22.5	36.5	30	13.5	42.9	17.53
	30.16	ST1-3/16		•	•	1030	4	115.5	71.7	12.5	101.5	89	22.5	36.5	30	13.5	38.1	15.93
	30.16	MST1-3/16				1035	2	124	75.5	12.5	101.5	89	22.5	36.5	30	13.5	42.9	17.53
	31.75	ST1-1/4R	•	•	•	1030	4	115.5	71.7	12.5	101.5	89	22.5	36.5	30	13.5	38.1	15.93
	31.75	ST1-1/4	•	•	•	1035	5	124	75.5	12.5	101.5	89	22.5	36.5	30	13.5	42.9	17.53
	34.925	ST1-3/8		•	•	1035	5	124	75.5	12.5	101.5	89	22.5	36.5	30	13.5	42.9	17.53
	34.925	MST1-3/8				1040	3	143.5	89.2	15.5	118	101	29	49.5	37	17.5	49.2	19.03
35		ST35	•	•	•	1035	5	124	75.5	12.5	101.5	89	22.5	36.5	30	13.5	42.9	17.53
35		MST35				1040	3	143.5	89.2	15.5	118	101	29	49.5	37	17.5	49.2	19.03
	36.512	ST1-7/16		•	•	1035	5	124	75.5	12.5	101.5	89	22.5	36.5	30	13.5	42.9	17.53
	36.512	MST1-7/16				1040	3	143.5	89.2	15.5	118	101	29	49.5	37	17.5	49.2	19.03
	38.1	ST1-1/2	•	•	•	1040	6	143.5	89.2	15.5	118	101	29	49.5	37	17.5	49.2	19.03
	38.1	MST1-1/2				1045	4	147	89.2	15.5	118	101	29	49.5	37	17.5	49.2	19.04
40		ST40	•	•	•	1040	6	143.5	89.2	15.5	118	101	29	49.5	37	17.5	49.2	19.03
40		MST40				1045	4	147	89.2	15.5	118	101	29	49.5	37	17.5	49.2	19.04
	41.275	ST1-5/8		•	•	1045	7	147	89.2	15.5	118	101	29	49.5	37	17.5	49.2	19.04
	42.862	ST1-11/16		•	•	1045	7	147	89.2	15.5	118	101	29	49.5	37	17.5	49.2	19.04
	42.862	MST1-11/16				1050	5	151	90.5	15.5	118	101	29	49.5	37	17.5	51.6	19.04
	44.45	ST1-3/4	•	•	•	1045	7	147	89.2	15.5	118	101	29	49.5	37	17.5	49.2	19.04
	44.45	MST1-3/4				1050	5	151	90.5	15.5	118	101	29	49.5	37	17.5	51.6	19.04
45		ST45	•	•	•	1045	7	147	89.2	15.5	118	101	29	49.5	37	17.5	49.2	19.04
45		MST45				1050	5	151	90.5	15.5	118	101	29	49.5	37	17.5	51.6	19.04

Take Up Units



Shaft Diameter (mm)		RHP designation	Variations	Basic Insert	Casting group	Dimensions(mm)												
Metric	Imperial		A	EC	DEC		L	L1	L2	H	H3	N	A	A1	A2	B	S	
Range	Range																	
47.625		ST1-7/8	•	•		1050	8	151	90.5	15.5	118	101	29	49.5	37	17.5	51.6	19.04
47.625		MST1-7/8				1055	6	182	114	19	146	130	35	63.5	46.5	27	55.6	22.24
49.212		ST1-15/16	•	•		1050	8	151	90.5	15.5	118	101	29	49.5	37	17.5	51.6	19.04
49.212		MST1-15/16				1055	6	182	114	19	146	130	35	63.5	46.5	27	55.6	22.24
50		ST50	•	•	•	1050	8	151	90.5	15.5	118	101	29	49.5	37	17.5	51.6	19.04
50		MST50				1055	6	182	114	19	146	130	35	63.5	46.5	27	55.6	22.24
50.8		ST2R				1050	8	151	90.5	15.5	118	101	29	49.5	37	17.5	51.6	19.04
50.8		ST2		•		1055	9	182	114	19	146	130	35	63.5	46.5	27	55.6	22.24
53.975		ST2-1/8		•		1055	9	182	114	19	146	130	35	63.5	46.5	27	55.6	22.24
55		ST55		•		1055	9	182	114	19	146	130	35	63.5	46.5	27	55.6	22.24
55		MST55				1060	7	192	119	19	146	130	35	63.5	46.5	27	65.1	25.44
55.562		ST2-3/16		•		1055	9	182	114	19	146	130	35	63.5	46.5	27	55.6	22.24
55.562		MST2-3/16				1060	7	192	119	19	146	130	35	63.5	46.5	27	65.1	25.44
57.15		ST2-1/4		•		1060	10	192	119	19	146	130	35	63.5	46.5	27	65.1	25.44
60		ST60		•		1060	10	192	119	19	146	130	35	63.5	46.5	27	65.1	25.44
60		MST60				1070	8	222.5	137.5	21.5	166.5	150.8	42	70	50.5	27	74.6	30.24
60.325		ST2-3/8		•		1060	10	192	119	19	146	130	35	63.5	46.5	27	65.1	25.44
61.912		ST2-7/16		•		1060	10	192	119	19	146	130	35	63.5	46.5	27	65.1	25.44
61.912		MST2-7/16				1070	8	222.5	137.5	21.5	166.5	150.8	42	70	50.5	27	74.6	30.24
63.5		ST2-1/2		•		1070	11	222.5	137.5	21.5	166.5	150.8	42	70	50.5	27	74.6	30.24
65		ST65		•		1070	11	222.5	137.5	21.5	166.5	150.8	42	70	50.5	27	74.6	30.24
65		MST65				1075	9	222.5	137.5	21.5	166.5	150.8	42	70	50.5	27	77.8	33.34
68.262		ST2-11/16		•		1070	11	222.5	137.5	21.5	166.5	150.8	42	70	50.5	27	74.6	30.24
68.262		MST2-11/16				1075	9	222.5	137.5	21.5	166.5	150.8	42	70	50.5	27	77.8	33.34
69.85		ST2-3/4		•		1075	12	222.5	137.5	21.5	166.5	150.8	42	70	50.5	27	77.8	33.34
70		ST70		•		1070	11	222.5	137.5	21.5	166.5	150.8	42	70	50.5	27	74.6	30.24
70		MST70				1075	9	222.5	137.5	21.5	166.5	150.8	42	70	50.5	27	77.8	33.34
73.025		ST2-7/8		•		1075	12	222.5	137.5	21.5	166.5	150.8	42	70	50.5	27	77.8	33.34
74.612		ST2-15/16		•		1075	12	222.5	137.5	21.5	166.5	150.8	42	70	50.5	27	77.8	33.34
74.612		MST2-15/16				1080	10	231.5	139.5	20.5	184	165.1	42	70	54	27	82.6	33.34
75		ST75		•		1075	12	222.5	137.5	21.5	166.5	150.8	42	70	50.5	27	77.8	33.34
75		MST75				1080	10	231.5	139.5	20.5	184	165.1	42	70	54	27	82.6	33.34

Take Up Units



Shaft Diameter (mm)		RHP designation	Variations	Basic Insert	Casting group	Dimensions(mm)										
Metric Range	Imperial Range		A EC DEC			L	L1	L2	H	H3	N	A	A1	A2	B	S
76.2		ST3		1080	13	231.5	139.5	20.5	184	165.1	42	70	54	27	82.6	33.34
80		ST80		1080	13	231.5	139.5	20.5	184	165.1	42	70	54	27	82.6	33.34
80		MST80		1085	11	260.5	162	28.5	198.5	173	47.5	79.5	68.5	46.05	85.7	34.15
80.962		ST3-3/16		1080	13	231.5	139.5	20.5	184	165.1	42	70	54	27	82.6	33.34
80.962		MST3-3/16		1085	11	260.5	162	28.5	198.5	173	47.5	79.5	68.5	46.05	85.7	34.15
82.55		ST3-1/4		1085	14	260.5	162	28.5	198.5	173	47.5	79.5	68.5	46.05	85.7	34.15
85		ST85		1085	14	260.5	162	28.5	198.5	173	47.5	79.5	68.5	46.05	85.7	34.15
85		MST85		1090	12	270	165	28.5	216	190.5	47.5	79.5	68.5	46.05	96	39.74
85.725		ST3-3/8		1085	14	260.5	162	28.5	198.5	173	47.5	79.5	68.5	46.05	85.7	34.15
87.312		ST3-7/16		1085	14	260.5	162	28.5	198.5	173	47.5	79.5	68.5	46.05	85.7	34.15
87.312		MST3-7/16		1090	12	270	165	28.5	216	190.5	47.5	79.5	68.5	46.05	96	39.74
88.9		MST3-1/2		1090	12	270	165	28.5	216	190.5	47.5	79.5	68.5	46.05	96	39.74
90		MST90		1090	12	270	165	28.5	216	190.5	47.5	79.5	68.5	46.05	96	39.74
95		MST95		3095	13	317.5	190.5	32	260.5	235	54.5	98.5	82.5	55.55	117.48	49.31
100		MST100		3095	13	317.5	190.5	32	260.5	235	54.5	98.5	82.5	55.55	117.48	49.31
100.012		MST3-15/16		3095	13	317.5	190.5	32	260.5	235	54.5	98.5	82.5	55.55	117.48	49.31
101.6		MST4		3095	13	317.5	190.5	32	260.5	235	54.5	98.5	82.5	55.55	117.48	49.31